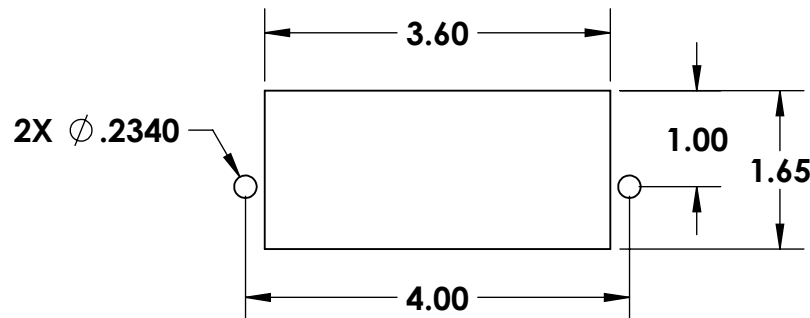
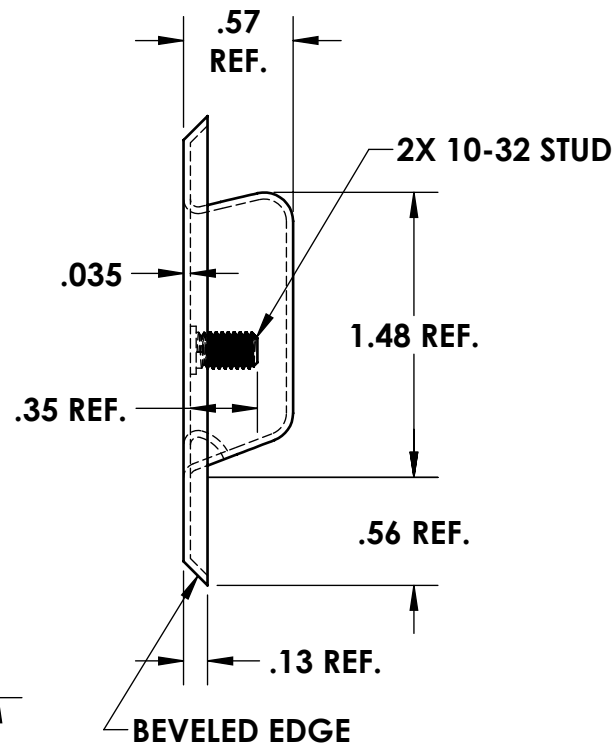
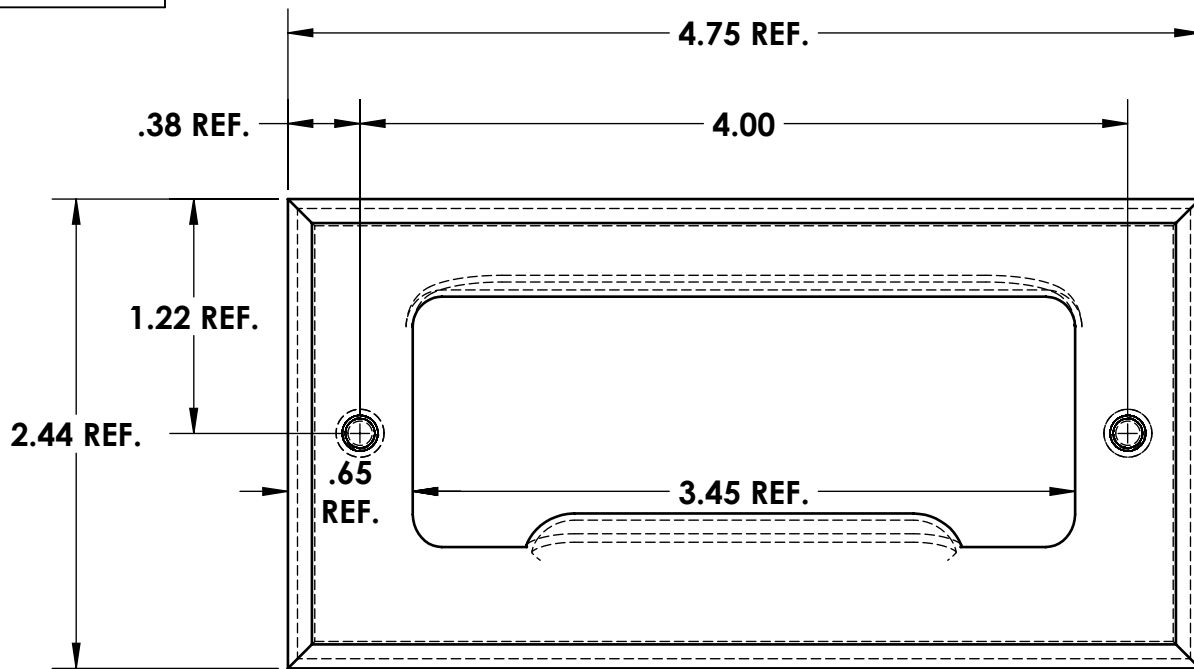


A

SIZE

PROJECTIONS

TOLERANCES UNLESS OTHERWISE SPECIFIED:			
PLACES	INCHES	NOTES:	
.XX	± .030	ACCEPTABLE BURR ± 10% OF MATERIAL THICKNESS	
.XXX	± .015	ALL TOLERANCES ARE NON-CUMULATIVE	
.XXX	± .005	ALL DIMENSIONS APPLY TO PART BEFORE ANY	
ANGLE	± 3°	FINISH IS APPLIED	



MOUNTING TEMPLATE

- NOTES:
1. FINISH: 29- BRUSHED TOPSIDE ONLY
 2. MAX. INSTALLATION TORQUE NOT TO EXCEED 25 IN-LBS
 3. TEST TORQUE 30-35 IN-LBS FOR INSPECTION ONLY

G	CONVERTED	04/05/2018	JG
F	.234 DIA WAS .203 DIA	10/24/2016	JG
E	ADDED .18 REF.	12/14/2007	CD
REV.	DESCRIPTION	DATE	APPD

REVISIONS

DWG #:

1899-32D

MATERIAL:

304-STs

FINISH:

SEE NOTE

DR. BY:

RAG

CK. BY:

CD

FAX:

1-631-737-2933

EMAIL:

info@guden.com

WEB:

www.guden.com

SCALE

1:1

DATE

09/01/1993

CODE IDENT. #

03007

GUDEN

INDUSTRIAL HARDWARE MADE EASY

99 RAYNOR AVE.

RONKONKOMA, N.Y. 11779

1-800-3-HINGES