

E.R. Wagner

CASTERS & WHEELS Manufacturing Co.

331 Riverview Drive
P.O. Box 405
Hustisford, WI 53034-0405

TITLE: CASTER, 4x1 1/4, PLSW

MATERIAL:

FINISH: ZINC PLATE

TOLERANCES

UNLESS OTHERWISE SPECIFIED

THIRD ANGLE PROJECTION	2 PLACE DECIMALS	3 PLACE DECIMALS	ANGLE
			

SCALE: 1:2

FIRST USE:

DRAWN: BH

DATE: 12/7/09

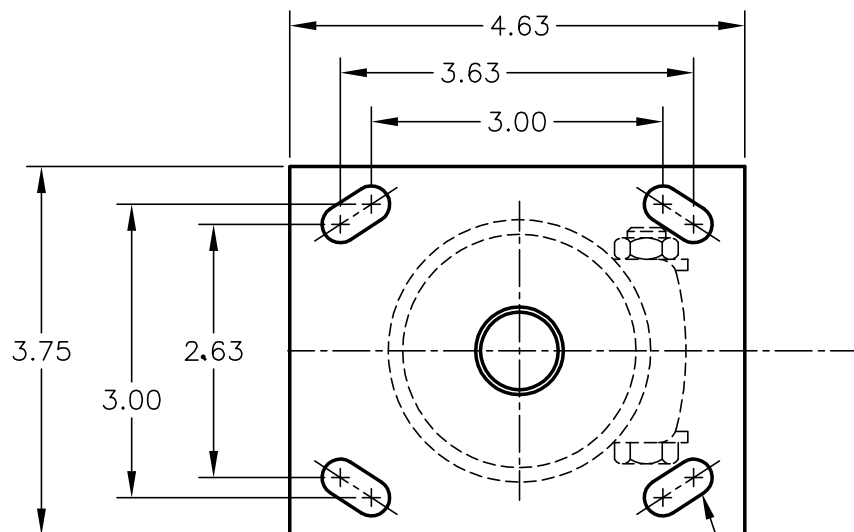
APPROVED: JA

DATE: 12/8/09

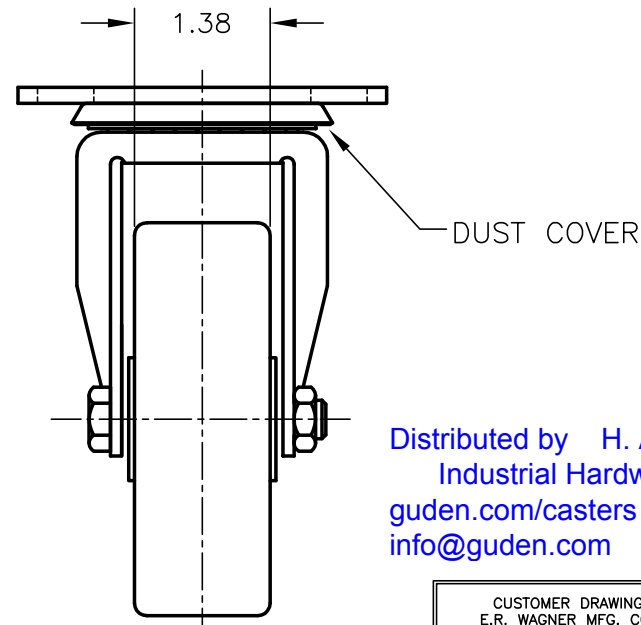
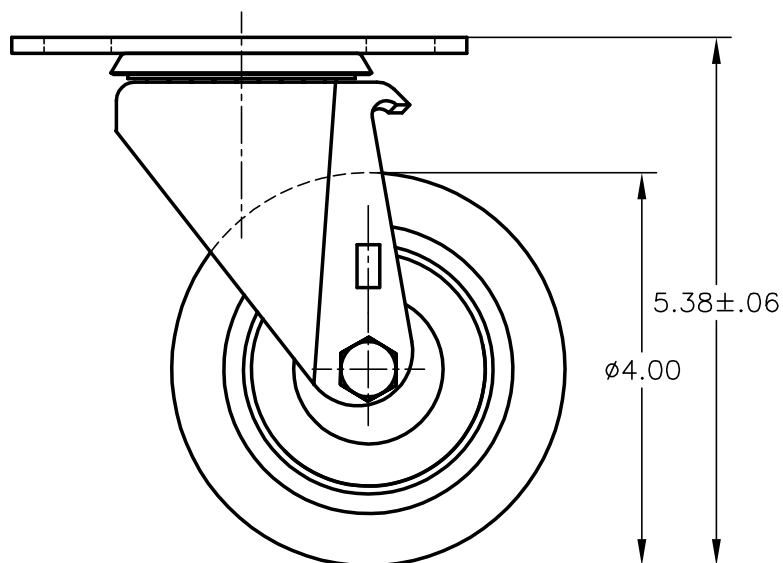
DRAWING NUMBER - REV.

3F28B4C25000199

(SALES PRINT)

CHANGESSIZE
A3/8 x 3/4 SLOT
4 PLACES

NOTE:
BLUE POLYURETHANE TREAD ON
GRAY POLYPROPYLENE HUB WITH
ROLLER BRG.
LOAD CAPACITY = 450 LBS.
SWIVEL RADIUS = 3 3/8"



Distributed by **H. A. GUDEN CO., INC.**
Industrial Hardware Made Easy
guden.com/casters 800-344-6437
info@guden.com 631-737-2900

CUSTOMER DRAWINGS ARE THE PROPERTY OF
E.R. WAGNER MFG. CO. CASTERS & WHEELS DIV.
AND ARE FOR REFERENCE ONLY. DRAWINGS ARE SUBJECT
TO CHANGE WITHOUT NOTIFICATION. ELECTRONIC FILES ARE
NOT TO BE USED FOR DIMENSIONAL ACCURACY, OR TO BE
MODIFIED, OR COPIED.