

E.R. Wagner
CASTERS & WHEELS Manufacturing Co.

331 Riverview Drive
P.O. Box 405
Hustisford, WI 53034-0405

TITLE: CASTER RIGID 4X1-1/4

MATERIAL:

FINISH: ZINC PLATE

TOLERANCES
UNLESS OTHERWISE SPECIFIED

THIRD ANGLE
PROJECTION

2 PLACE
DECIMALS

3 PLACE
DECIMALS

ANGLE



SCALE: NTS

FIRST USE:

DRAWN: JA

DATE: 10/10/13

APPROVED:

DATE:

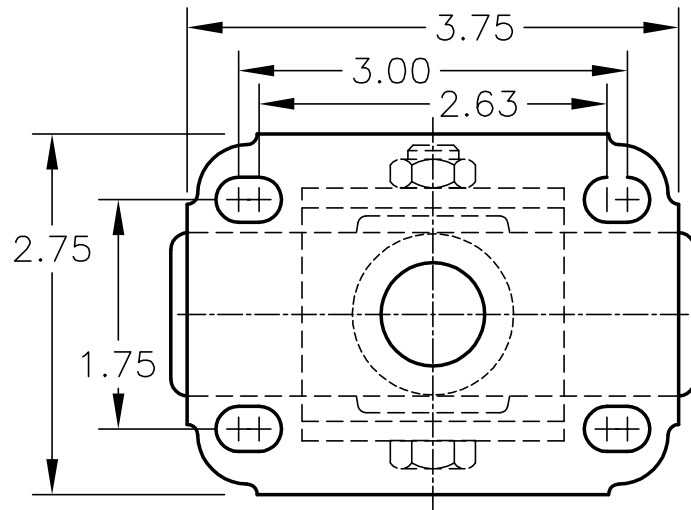
DWG. No.

3F0344B250001AM

(SALES PRINT)

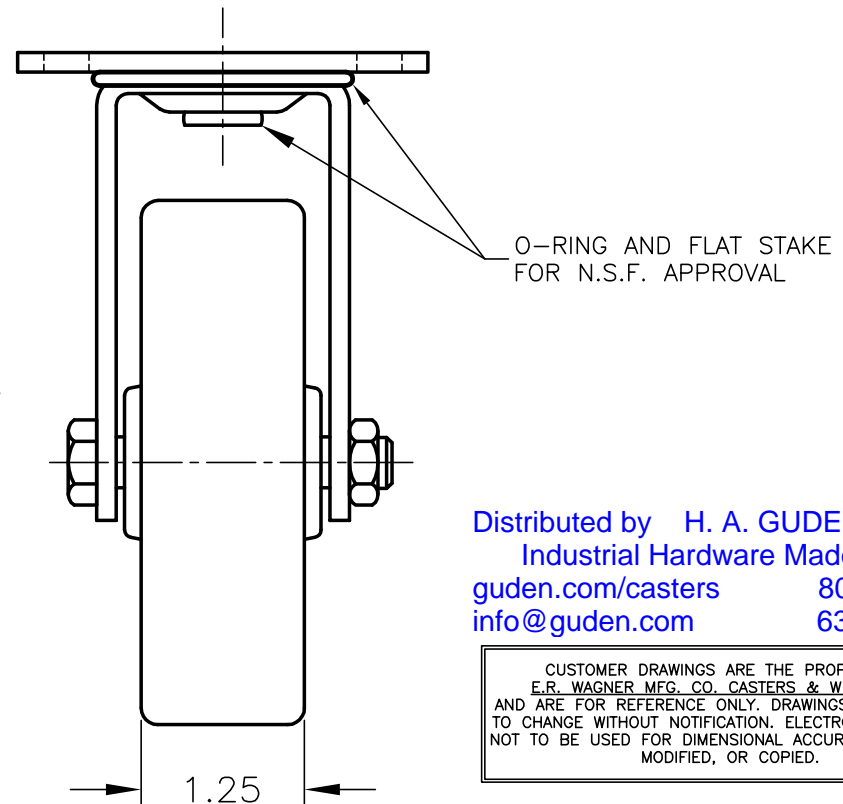
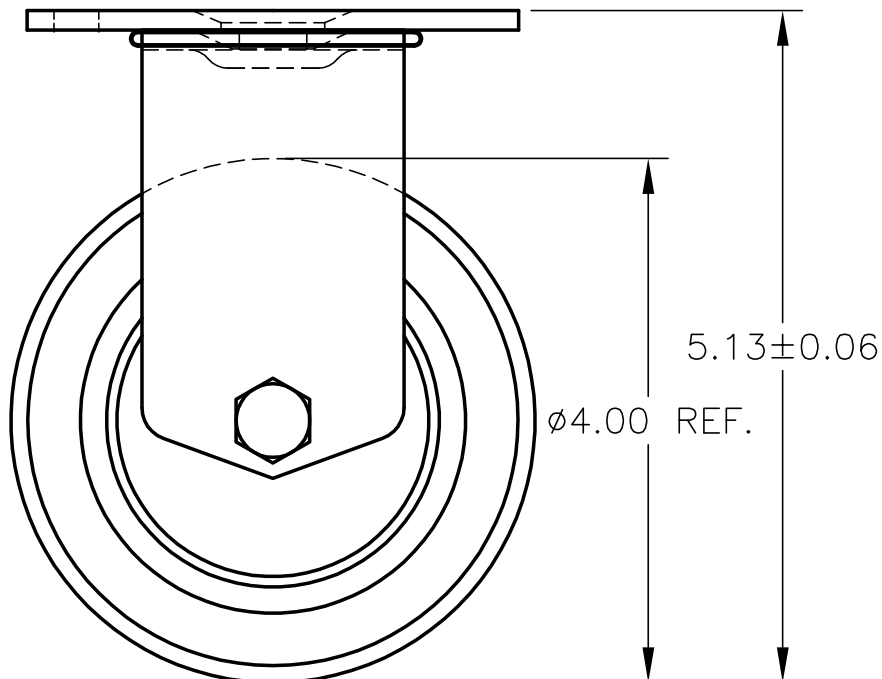
CHANGES

A



NOTES:

- 1) LOAD CAPACITY: 275 lbs.
- 2) WHEEL: POLY II URETHANE
WITH DELRIN BEARING



Distributed by **H. A. GUDEN CO., INC.**
Industrial Hardware Made Easy
guden.com/casters 800-344-6437
info@guden.com 631-737-2900

CUSTOMER DRAWINGS ARE THE PROPERTY OF
E.R. WAGNER MFG. CO. CASTERS & WHEELS DIV.
AND ARE FOR REFERENCE ONLY. DRAWINGS ARE SUBJECT
TO CHANGE WITHOUT NOTIFICATION. ELECTRONIC FILES ARE
NOT TO BE USED FOR DIMENSIONAL ACCURACY, OR TO BE
MODIFIED, OR COPIED.