

**E.R. Wagner**  
CASTERS & WHEELS Manufacturing Co.

331 Riverview Drive  
P.O. Box 405  
Hustisford, WI 53034-0405

TITLE: 5 x 2, PLATE SWIVEL W/BRAKE

MATERIAL:

FINISH: ZINC PLATE

**TOLERANCES**  
UNLESS OTHERWISE SPECIFIED

THIRD ANGLE PROJECTION	2 PLACE DECIMALS	3 PLACE DECIMALS	ANGLE
			

SCALE: 1:2

FIRST USE:

DRAWN: JA

DATE: 1/22/09

APPROVED: BH

DATE: 1/22/09

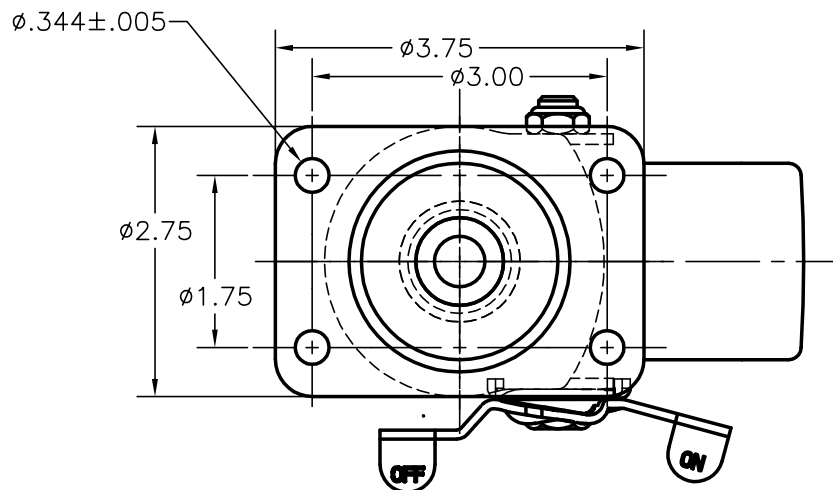
DWG. No.

**1F3805404002100**

SALES PRINT

**CHANGES**

1 CHANGE SWIVEL RADIUS WAS  
4 3/16" 12/4/13

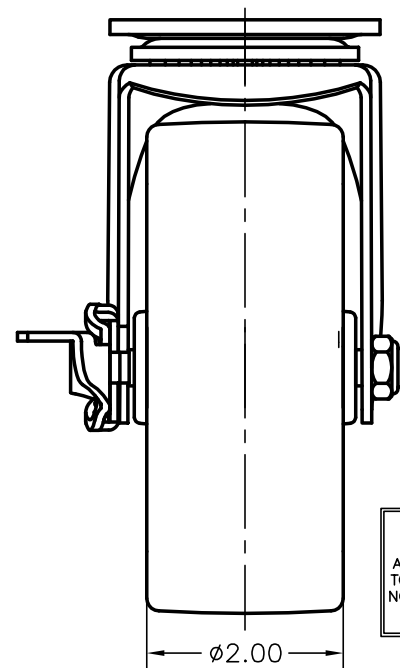
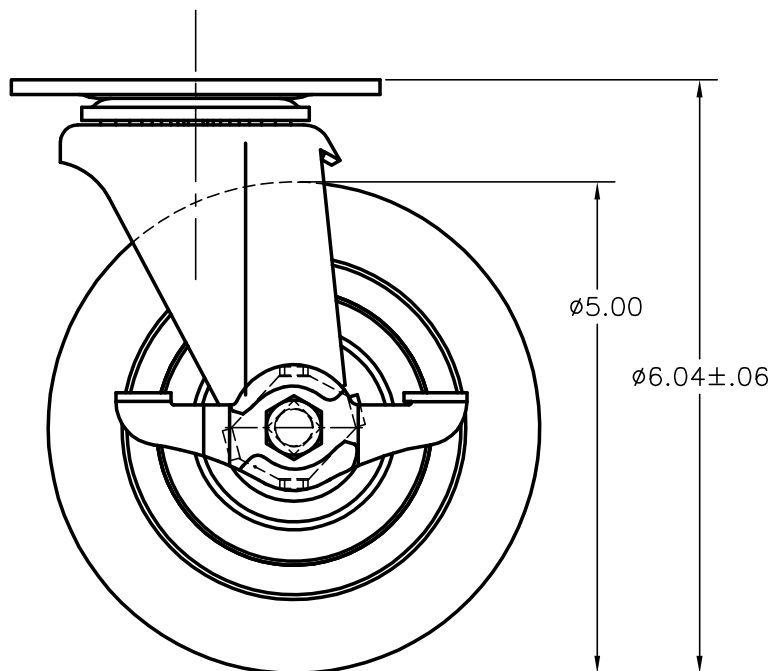


SPECIFICATIONS:

WHEEL: 5 x 2 SOFT RUBBER  
TREAD ON HARD RUBBER CORE  
WITH DELRIN BEARING

LOAD RATING: 350 LBS.

SWIVEL RADIUS: 3 1/2" ①



Distributed by **H. A. GUDEN CO., INC.**  
Industrial Hardware Made Easy  
guden.com/casters 800-344-6437  
info@guden.com 631-737-2900

CUSTOMER DRAWINGS ARE THE PROPERTY OF  
E.R. WAGNER MFG. CO. CASTERS & WHEELS DIV.  
AND ARE FOR REFERENCE ONLY. DRAWINGS ARE SUBJECT  
TO CHANGE WITHOUT NOTIFICATION. ELECTRONIC FILES ARE  
NOT TO BE USED FOR DIMENSIONAL ACCURACY, OR TO BE  
MODIFIED, OR COPIED.