

A
SIZE

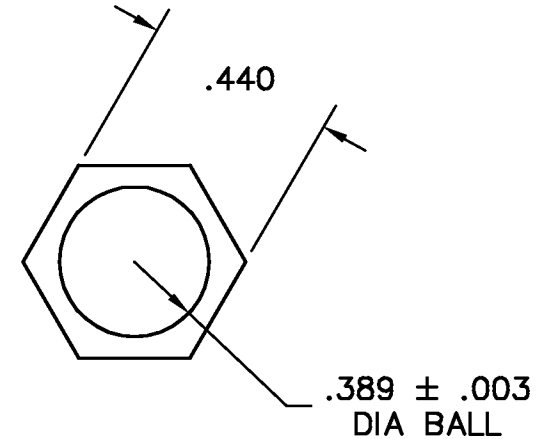
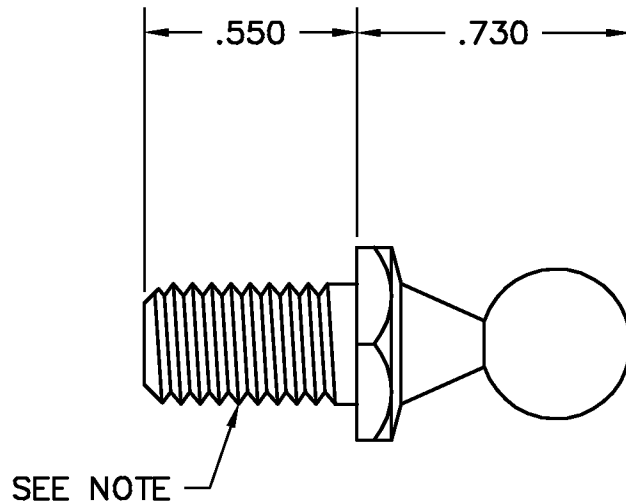
PROJECTIONS



TOLERANCES UNLESS OTHERWISE SPECIFIED:

PLACES	INCH
.XX	± .030
.XXX	± .015
.XXXX	± .005
ANGLE	3°

NOTE:
ACCEPTABLE BURR ± 10% OF MATERIAL THICKNESS
ALL TOLERANCES ARE NON-CUMULATIVE
ALL DIMENSIONS APPLY TO PART BEFORE ANY FINISH IS APPLIED



- NOTES:
1. FINISH: 90- BARREL ZINC & CLEAR CHROMATE
 2. THREADED FOR 5/16-18 UNC-2A
 3. CASE HARDEN AND TEMPER TO ROCKWELL C-45 MIN., .004-.008 DEEP AND CHECK ON SPHERICAL DIAMETER.
 4. AVAILABLE FOR USE WITH GUDEN END FITTINGS EF030, EF090 AND EF110.

DWG		SCALE	2:1	CODE IDENT. #
BS101-02		DATE	02/01/99	03007
MATERIAL	FINISH			
PS	SEE NOTE			
DR. BY RAG	CK. BY CD	99 RAYNOR AVE. RONKONKOMA, N.Y. 11779 1-800-3-HINGES		
FAX: 1-631-737-2933				
EMAIL: info@guden.com				
WEB: www.guden.com				

LTR	DESCRIPTION	DATE	APPD
K	REDRAWN, VARIOUS CHANGES	02/01/99	CD
J	VARIOUS CHANGES	10/25/93	CD
I	REDRAWN, VARIOUS CHANGES	11/19/92	AG
REVISION			