

A
SIZE

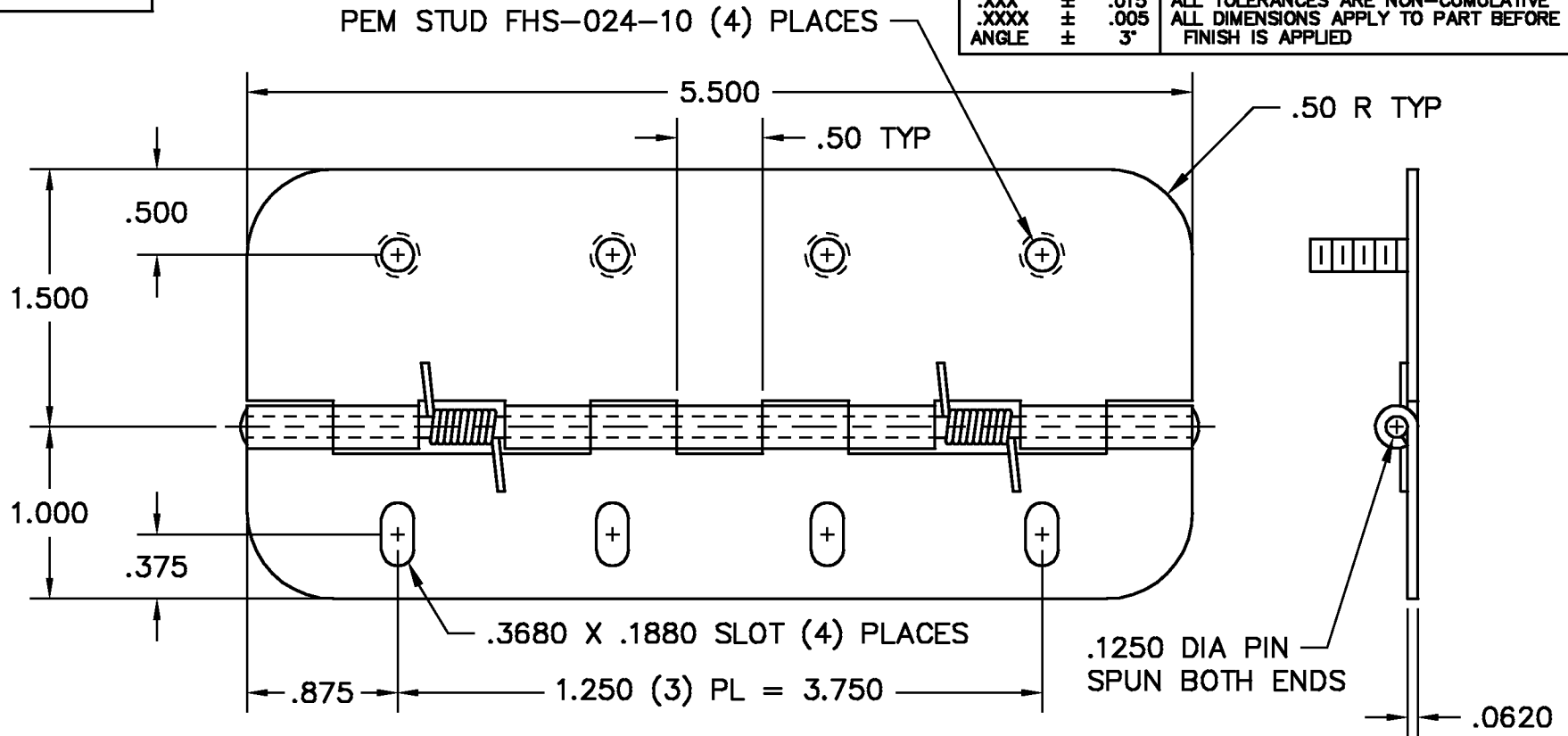
PROJECTIONS



TOLERANCES UNLESS OTHERWISE SPECIFIED:

PLACES	INCH
.XX	± .030
.XXX	± .015
.XXXX	± .005
ANGLE	3°

NOTE:
ACCEPTABLE BURR ± 10% OF MATERIAL THICKNESS
ALL TOLERANCES ARE NON-CUMULATIVE
ALL DIMENSIONS APPLY TO PART BEFORE ANY FINISH IS APPLIED



- NOTES:
- FINISH: 21- ELECTRO POLISH - BEFORE SATIN
11- SATIN - TOP SIDE & KNUCKLE ALL AROUND (1.000 LEAF ONLY)
11- SATIN - BOTTOM SIDE & KNUCKLE ALL AROUND (1.500 LEAF ONLY)
 - SPRING: LOADED TO OPEN (2) PLACES
12 IN-LBS MAX. AT 90°
6 IN-LBS MIN. AT 180°

LTR	DESCRIPTION	DATE	APPD
D	CORRECTED SPRING	01/05/98	CD
C	CHANGED FINISH	10/24/94	RK
B	ADDED SATIN FINISH	06/30/94	RK
A	PIN WAS STAKED	02/14/94	CD
REVISION			

DWG 500746-0194	
MATERIAL STS	FINISH SEE NOTE
DR. BY RAG	CK. BY CD
FAX: 1-631-737-2933 EMAIL: info@guden.com WEB: www.guden.com	

SCALE	1:1	CODE IDENT. #
DATE	02/02/94	03007
99 RAYNOR AVE. RONKONKOMA, N.Y. 11779 1-800-3-HINGES		