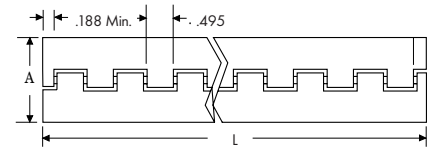
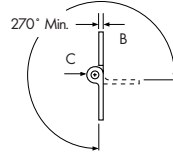


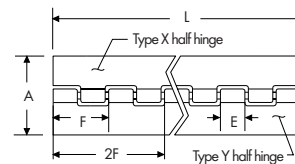
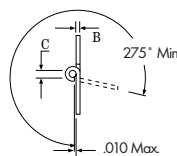
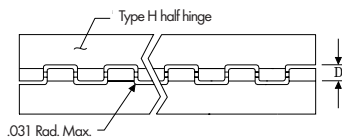
MILITARY HARDWARE

MS-20001 SERIES CONTINUOUS HINGES; TYPE 2024-T3511 EXTRUDED ALUMINUM

Specify	For
P	Anodized per Mil-A-8625, Type II
C	Alodine per Mil-C-5541
A	Aluminum Alloy 7075-T 73511



Dash No.	A Open Width	B - Leaf Thickness		C Pin Diameter
		Maximum	Minimum	
-2	1.062	.056	.044	.090
-3	1.250	.056	.044	.090
-4	1.500	.056	.044	.090
-5	1.750	.056	.044	.090
-6	2.000	.056	.044	.090
-8	2.000	.076	.064	.180
-9	2.500	.056	.044	.090
-10	2.750	.056	.044	.090
-12	3.375	.115	.103	.090
-14	3.719	.163	.149	.129
-16	3.938	.210	.196	.180



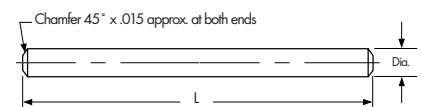
MS-20257 SERIES CONTINUOUS HINGES

Dash No.	Alum. Alloy	Cor. Res. Steel	A Open Width	B Leaf Thickness		C Hole Diameter		D Slot Depth		E Loop	F Pitch	Pin Diameter Cor. Res. Steel
				Alum. Alloy	Cor. Res. Steel	Alum. Alloy	Cor. Res. Steel	Alum. Alloy	Cor. Res. Steel			
1	P1	C1	.75	.032	.031	.066	.066	.169	.166	.490	1.000	.063
2	P2	C2	1.06	.040	.037	.093	.093	.220	.211	.490	1.000	.090
3	P3	C3	1.25	.040	.050	.093	.121	.220	.278	.490	1.000	.118
4	P4	C4	1.50	.040	.062	.093	.121	.220	.314	.490	1.000	.118
5	P5	C5	2.00	.051	.062	.093	.183	.253	.376	.490	1.000	.180
6	P6	C6	2.00	.064	.062	.183	.183	.382	.376	1.990	4.047	.180

MS-20253* AND A-A-55486 HINGE PINS FOR MS-20257 AND MS-20001 SERIES CONTINUOUS HINGES

Dash No.	Cadmium plated		Diameter
	Passivated		
-P1	-1	.062	
-P2	-2	.089	
-P3	-3	.117	
-P4	-4	.179	
-P5	-5	.129	

1. Use cadmium plated, corrosion resistant steel with aluminum alloy hinge.
2. Use passivated corrosion resistant steel pin with corrosion resistant steel hinge.
3. Normally supplied 72" long, i.e., MS-20253-72.00.
4. Add L length to denote solid film lubricant.



Note: Whole hinges supplied with pins; half hinges supplied without pins. All parts are stocked 72" long.
 * Now AS-20253, but no change to MS-20253 part numbers.

MS-35000 SERIES CONTINUOUS HINGES

MS No.	Leaf				Dash No. - Open Width																			
	Thickness	Knuckle	Pin Dia.	Length	-1	-2	-3	-4	-5	-6	-7	-8	-9	-10	-11	-12	-13	-14	-15	-16	-17	-18	-19	-20
MS-35821	.032	0.5	.063	72						.75	1	1.06	1.25	1.5										
MS-35822	.040	0.5	.091	72									1.06	1.25	1.5	2								
	.040	.62	.091	72.50													1.06	1.25	1.5	2				
MS-35823	.050	.62	.125	72.50					1.06	1.5	2	2.5												
MS-35825	.060	.62	.125	85									1.06	1.5	2	2.5								
	.060	1	.125	84													1.06	1.5	2	2.5				
MS-35826	.060	1	.187	84									1.06	1.5	2	2.5								
	.060	2	.187	84													1.06	1.5	2	2.5				
MS-35829	.075	2	.187	84											2	2.5	3	3.5	4					
	.075	2	.250	84																2	2.5	3	3.5	4
MS-35830	.090	2	.250	84					4	5	6				3	3.5	4	5						
	.090	2	.312	84																				
MS-35831	.090	2	.375	84															4	5	6			
	.125	2	.312	84	4	5																		
	.125	2	.375	84						4	5	6												

- Notes: 1. The MS part number consists of the MS No. plus the Dash No. followed by the applicable letter for material, i.e., MS35821-6A or MS35821-8D.
 2. Materials are available in A aluminum, B brass leaf & copper pin, C stainless steel leaf & pin, D plain steel leaf & pin, and E plain steel leaf, cadmium plated & brass pin.
 3. When protective finish is required for D materials, add F to the dash number, i.e., MS35821-8DF.
 4. See Military Specifications for more detailed information on materials and finishes.

A-A-55000 SERIES CONTINUOUS HINGES

MS No.	Leaf				Dash No. - Open Width																			
	Thickness	Knuckle	Pin Dia.	Length	-1	-2	-3	-4	-5	-6	-7	-8	-9	-10	-11	-12	-13	-14	-15	-16	-17	-18	-19	-20
A-A-55589	.032	0.5	.063	72						.75	1	1.06	1.25	1.5										
A-A-55590	.040	0.5	.091	72									1.06	1.25	1.5	2								
	.040	.62	.091	72.50													1.06	1.25	1.5	2				
A-A-55591	.050	.62	.125	72.50					1.06	1.5	2	2.5												
A-A-55592	.060	.62	.125	85									1.06	1.5	2	2.5								
	.060	1	.125	84													1.06	1.5	2	2.5				
A-A-55593	.060	1	.187	84									1.06	1.5	2	2.5								
	.060	2	.187	84													1.06	1.5	2	2.5				
A-A-55594	.075	2	.187	84											2	2.5	3	3.5	4					
	.075	2	.250	84																2	2.5	3	3.5	4
A-A-55595	.090	2	.250	84					4	5	6				3	3.5	4	5						
	.090	2	.312	84																				
A-A-55596	.090	2	.375	84															4	5	6			
	.125	2	.312	84	4	5																		
	.125	2	.375	84						4	5	6												

- Notes: 1. The AA part number consists of the AA No. plus the Dash No. followed by the applicable letter for material, i.e., AA55589-6A or AA55589-8D.
 2. Materials are available in A aluminum, B brass leaf & copper pin, C stainless steel leaf & pin, D plain steel leaf & pin, and E plain steel leaf, cadmium plated & brass pin.
 3. C materials will be supplied with passivated leaves.
 4. When protective finish is required for D materials, add F to the dash number, i.e., AA55589-8DF.
 5. See Military Specifications for more detailed information on materials and finishes.

COMPRESSION SPRING CATCH AND STRIKE

Part No.	Overall Length	Maximum Width	Holes	Material	Finish
MS18015002 (Catch)	Per MS	Per MS	.128	Steel & Stainless	Per MS
MS18015003 (Strike)	Per MS	Per MS	.128	Steel & Stainless	Per MS

Note: One (1) MS-18015-2 (Catch) and one (1) MS-18015-3 (Strike) equals one (1) MS-18015-1.



MILITARY HARDWARE

CHEST HANDLES

Part No.	Finish	Holes	Plate	Width of Bail		Material
				Inside		
MS35791001	Per MS	4	3.62 x 2.94	3.50		Steel
MS35791002	Per MS	4	4.88 x 4.19	4.50		Steel
MS35793001	Per MS	5	4.88 x 4.19	4.50		Steel

SPRING LOADED CHEST HANDLES

Part No.	Finish	Holes	Plate	Width of Bail		Material	
				Inside		Back Plate	Bail
MS18012001	Per MS	Yes	4.75 x 2.75	4.38		Per MS	Per MS
MS18012002	Per MS	No	4.75 x 2.75	4.38		Per MS	Per MS
MS18012003	Per MS	Yes	4.75 x 2.75	4.38		Per MS	Per MS
MS18012004	Per MS	No	4.75 x 2.75	4.38		Per MS	Per MS
MS18012005	Per MS	Yes	4.75 x 2.75	4.38		Per MS	Per MS
MS18012006	Per MS	No	4.75 x 2.75	4.38		Per MS	Per MS

NAVY LOCKER HARDWARE



No. 8696-15
Buships-Part No. 13
2" "T" Handle
Cast Brass
Satin Nickel



No. 8726-32
Buships-Part No. 42
Latch
Escutcheon
Stainless Steel



No. 8698-15
Buships-Part No. 26
Brass Hook Assembly
Cast Brass, Satin Nickel



No. 8697-15
Buships-Part No. 21
2" "T" Handle
Cast Brass
Satin Nickel



No. 8213-02
Buships-Part No. 41
Latch
Plain Steel
Zinc Plated



No. 7174-15
Buships-Part No. 5
3" Pull
Cast Brass
Satin Nickel



No. 8234-15
Buships-Part No. 33
Cast Brass Strike
Satin Nickel



No. 8612-02
Buships-Part No. 40
Strap
Steel
Zinc Plated



No. 8613-15
Buships-Part No. 32
Handle
Cast Brass
Satin Nickel



No. 10406-15*
Buships-Part No. 10
Strike
Cast Brass
Satin Nickel



No. 8614-02
Buships-Part No. 39
Cam
Steel
Zinc Plated

No. 8614-32
Stainless Steel

Note: Reference Buships Print No. S-3200-860055.

* This strike is on Buships drawing 805-1749239.