

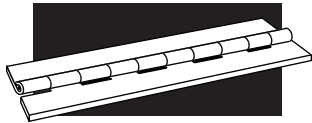
HINGES HANDLES STRIKES LATCHES STRAPSHOOKS HINGESH LATCHES STRA



# MILITARY HARDWARE

## CONTENTS

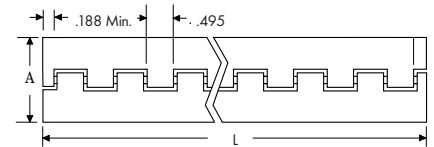
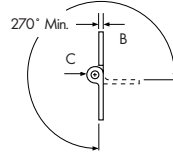
30	<i>MS-20001 Series Hinges</i>	31	<i>MS-35000 Series Hinges</i>	32	<i>Chest Handles</i>
30	<i>MS-20257 Series Hinges</i>	31	<i>A-A-55000 Series Hinges</i>	32	<i>Spring-Loaded Chest Handles</i>
30	<i>MS-20253 Series Hinges</i>	31	<i>Compression Spring Catches</i>	32	<i>Navy Locker Hardware</i>



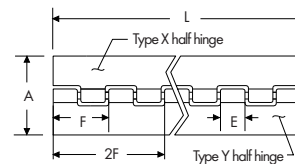
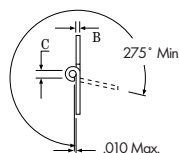
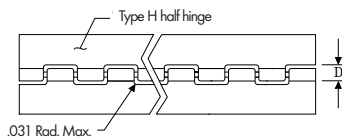
# MILITARY HARDWARE

## MS20001 SERIES CONTINUOUS HINGES; TYPE 2024-T3511 EXTRUDED ALUMINUM

Specify	For
P	Anodized per Mil-A-8625, Type II
C	Alodine per Mil-C-5541
A	Aluminum Alloy 7075-T 73511



Dash No.	A Open Width	B - Leaf Thickness		C Pin Diameter
		Maximum	Minimum	
-2	1.062	.056	.044	.090
-3	1.250	.056	.044	.090
-4	1.500	.056	.044	.090
-5	1.750	.056	.044	.090
-6	2.000	.056	.044	.090
-8	2.000	.076	.064	.180
-9	2.500	.056	.044	.090
-10	2.750	.056	.044	.090
-12	3.375	.115	.103	.090
-14	3.719	.163	.149	.129
-16	3.938	.210	.196	.180



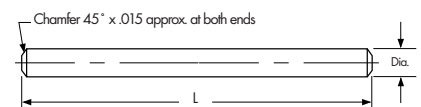
## MS20257 SERIES CONTINUOUS HINGES

Dash No.	Alum. Alloy	Cor. Res. Steel	A Open Width	B Leaf Thickness		C Hole Diameter		D Slot Depth		E Loop	F Pitch	Pin Diameter Cor. Res. Steel
				Alum. Alloy	Cor. Res. Steel	Alum. Alloy	Cor. Res. Steel	Alum. Alloy	Cor. Res. Steel			
1	P1	C1	.75	.032	.031	.066	.066	.169	.166	.490	1.000	.063
2	P2	C2	1.06	.040	.037	.093	.093	.220	.211	.490	1.000	.090
3	P3	C3	1.25	.040	.050	.093	.121	.220	.278	.490	1.000	.118
4	P4	C4	1.50	.040	.062	.093	.121	.220	.314	.490	1.000	.118
5	P5	C5	2.00	.051	.062	.093	.183	.253	.376	.490	1.000	.180
6	P6	C6	2.00	.064	.062	.183	.183	.382	.376	1.990	4.047	.180

## MS20253\* AND A-A-55486 HINGE PINS FOR MS20257 AND MS20001 SERIES CONTINUOUS HINGES

Dash No.	Cadmium plated		Diameter
	Passivated		
-P1	-1	.062	
-P2	-2	.089	
-P3	-3	.117	
-P4	-4	.179	
-P5	-5	.129	

1. Use cadmium-plated, corrosion-resistant steel with aluminum alloy hinge.
2. Use passivated corrosion-resistant steel pin with corrosion-resistant steel hinge.
3. Normally supplied 72" long, i.e., MS20253-7200.
4. Add L length to denote solid film lubricant.



Note: Whole hinges supplied with pins; half hinges supplied without pins. All parts are stocked 72" long.  
 \* Now AS-20253, but no change to MS-20253 part numbers.

**MS-35000 SERIES CONTINUOUS HINGES**

MS No.	Leaf				Dash No. - Open Width																			
	Thickness	Knuckle	Pin Dia.	Length	-1	-2	-3	-4	-5	-6	-7	-8	-9	-10	-11	-12	-13	-14	-15	-16	-17	-18	-19	-20
MS-35821	.032	.50	.063	72						.75	1	1.06	1.25	1.5										
MS-35822	.040	.50	.091	72									1.06	1.25	1.5	2								
	.040	.62	.091	72.50													1.06	1.25	1.5	2				
MS-35823	.050	.62	.125	72.50					1.06	1.5	2	2.5												
MS-35825	.060	.62	.125	85									1.06	1.5	2	2.5								
	.060	1	.125	84													1.06	1.5	2	2.5				
MS-35826	.060	1	.187	84									1.06	1.5	2	2.5								
	.060	2	.187	84													1.06	1.5	2	2.5				
MS-35829	.075	2	.187	84											2	2.5	3	3.5	4					
	.075	2	.250	84																2	2.5	3	3.5	4
MS-35830	.090	2	.250	84											3	3.5	4	5						
	.090	2	.312	84					4	5	6													
	.090	2	.375	84																4	5	6		
MS-35831	.125	2	.312	84	4	5																		
	.125	2	.375	84						4	5	6												

- Notes: 1. The MS part number consists of the MS No. plus the Dash No. followed by the applicable letter for material, i.e., MS35821-6A or MS35821-8D.  
 2. Materials are available in A aluminum, B brass leaf & copper pin, C stainless steel leaf & pin, D plain steel leaf & pin, and E plain steel leaf, cadmium-plated & brass pin.  
 3. When protective finish is required for D materials, add F to the dash number, i.e., MS35821-8DF.  
 4. See Military Specifications for more detailed information on materials and finishes.

**A-A-55000 SERIES CONTINUOUS HINGES**

MS No.	Leaf				Dash No. - Open Width																			
	Thickness	Knuckle	Pin Dia.	Length	-1	-2	-3	-4	-5	-6	-7	-8	-9	-10	-11	-12	-13	-14	-15	-16	-17	-18	-19	-20
A-A-55589	.032	.50	.063	72						.75	1	1.06	1.25	1.5										
A-A-55590	.040	.50	.091	72									1.06	1.25	1.5	2								
	.040	.62	.091	72.50													1.06	1.25	1.5	2				
A-A-55591	.050	.62	.125	72.50					1.06	1.5	2	2.5												
A-A-55592	.060	.62	.125	85									1.06	1.5	2	2.5								
	.060	1	.125	84													1.06	1.5	2	2.5				
A-A-55593	.060	1	.187	84									1.06	1.5	2	2.5								
	.060	2	.187	84													1.06	1.5	2	2.5				
A-A-55594	.075	2	.187	84											2	2.5	3	3.5	4					
	.075	2	.250	84																2	2.5	3	3.5	4
A-A-55595	.090	2	.250	84											3	3.5	4	5						
	.090	2	.312	84					4	5	6													
	.090	2	.375	84																4	5	6		
A-A-55596	.125	2	.312	84	4	5																		
	.125	2	.375	84						4	5	6												

- Notes: 1. The AA part number consists of the AA No. plus the Dash No. followed by the applicable letter for material, i.e., AA55589-6A or AA55589-8D.  
 2. Materials are available in A aluminum, B brass leaf & copper pin, C stainless steel leaf & pin, D plain steel leaf & pin, and E plain steel leaf, cadmium-plated & brass pin.  
 3. C materials will be supplied with passivated leaves.  
 4. When protective finish is required for D materials, add F to the dash number, i.e., AA55589-8DF.  
 5. See Military Specifications for more detailed information on materials and finishes.

**COMPRESSION SPRING CATCH AND STRIKE**

Part No.	Overall Length	Maximum Width	Holes	Material	Finish
MS18015002 (Catch)	Per MS	Per MS	.128	Steel & Stainless	Zinc with Yellow Chromate
MS18015003 (Strike)	Per MS	Per MS	.128	Steel & Stainless	Zinc with Yellow Chromate

Note: One (1) MS-18015-2 (Catch) and one (1) MS-18015-3 (Strike) equals one (1) MS-18015-1.



# MILITARY HARDWARE

## CHEST HANDLES

Part No.	Finish	Holes	Plate	Width of Bail Inside	Material
MS35791001	Per MS	4	3.62 x 2.94	3.50	Steel
MS35791002	Per MS	4	4.88 x 4.19	4.50	Steel
MS35793001	Per MS	5	4.88 x 4.19	4.50	Steel

## SPRING-LOADED CHEST HANDLES

Part No.	Finish	Holes	Plate	Width of Bail Inside	Material Back Plate	Bail
MS18012001	Per MS	Yes	4.75 x 2.75	4.38	Per MS	Per MS
MS18012002	Per MS	No	4.75 x 2.75	4.38	Per MS	Per MS
MS18012003	Per MS	Yes	4.75 x 2.75	4.38	Per MS	Per MS
MS18012004	Per MS	No	4.75 x 2.75	4.38	Per MS	Per MS
MS18012005	Per MS	Yes	4.75 x 2.75	4.38	Per MS	Per MS
MS18012006	Per MS	No	4.75 x 2.75	4.38	Per MS	Per MS

## NAVY LOCKER HARDWARE



**No. 8696-15**  
Buships-Part No. 13  
2" "T" Handle  
Cast Brass  
Satin Nickel



**No. 8726-32**  
Buships-Part No. 42  
Latch  
Escutcheon  
Stainless Steel



**No. 7174-15**  
Buships-Part No. 5  
3" Pull  
Cast Brass  
Satin Nickel



**No. 8697-15**  
Buships-Part No. 21  
2" "T" Handle  
Cast Brass  
Satin Nickel



**No. 8213-02**  
Buships-Part No. 41  
Latch  
Plain Steel  
Zinc Plated



**No. 8613-15**  
Buships-Part No. 32  
Handle  
Cast Brass  
Satin Nickel

**No. 8213-32**  
Stainless Steel



**No. 8234-15**  
Buships-Part No. 33  
Cast Brass Strike  
Satin Nickel



**No. 8612-02**  
Buships-Part No. 40  
Strap  
Steel  
Zinc-Plated

**No. 8612-32**  
Stainless Steel



**No. 10406-15\***  
Buships-Part No. 10  
Strike  
Cast Brass  
Satin Nickel



**No. 8614-02**  
Buships-Part No. 39  
Cam  
Steel  
Zinc-Plated

**No. 8614-32**  
Stainless Steel

Note: Reference Buships Print No. S-3200-860055.

\* This strike is on Buships drawing 805-1749239.