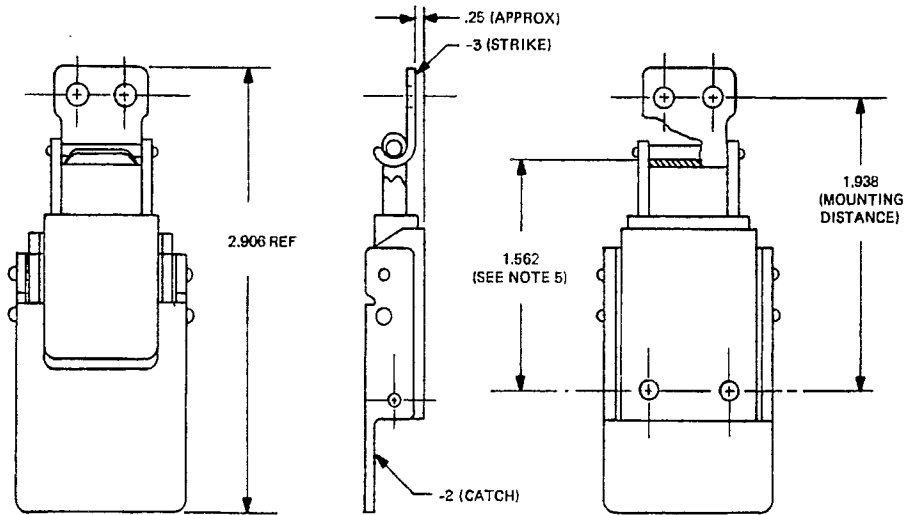


NOTICE - REVIEW/USER INFORMATION IS CURRENT AS OF DATE OF THIS DOCUMENT. FOR FUTURE COORDINATION OF CHANGES TO THIS DOCUMENT, DRAFT CIRCULATION SHOULD BE BASED ON THE INFORMATION IN THE CURRENT FEDERAL SUPPLY CLASSIFICATION LISTING OF DOD STANDARDIZATION DOCUMENTS.

USER INTEREST:
ARMY - EL, GL
NAVY -

REVIEWER INTEREST:
ARMY - MU
NAVY - AS
DSR - IS

This military standard is approved by the Department of Defense and is mandatory for use by all Departments & Agencies of the Department of Defense. Selection for all new engineering and design applications and for repetitive use shall be made from this document.



-1 CATCH CLAMPING (CATCH AND STRIKE ASSEMBLY)

PART NO.	PART IDENTIFICATION
MS 1805-1	CATCH, CLAMPING (CATCH AND STRIKE ASSEMBLY)
MS 1805-2	CATCH, CLAMPING (WITHOUT STRIKE)
MS 1805-3	STRIKE, CATCH

NOTES:

- MATERIAL: (A) YOKE, SPRING HOUSING: CORROSION RESISTING STEEL per QQ-S-766, Class 302, Cond. 9
(B) SPRINGS, WIRE, SPRING per QQ-W-412 & QQ-W-428, QQ-W-470 (SPRINGS CONCEALED)
(C) ALL REMAINING PARTS, CARBON STEEL per QQ-S-698
- FINISH: CARBON STEEL PARTS; CADMIUM PLATE, QQ-P-416, TYPE 2, CLASS 2
- REMOVE ALL BURRS AND BREAK ALL SHARP EDGES
- DIMENSIONS IN INCHES UNLESS OTHERWISE SPECIFIED, TOLERANCE $\pm .015$
- TENSION: STANDARD SPRING TENSION WITH 1/8 DEFLECTION TO 1.562 DIMENSION = 70 POUNDS
- THIS ASSEMBLY IS MADE FOR USE ON CONTAINERS WITH OVERLAPPING EDGES. CONTAINERS WITH EVEN MATING EDGES REQUIRE THE USE OF SHIMS.
- ULTIMATE STRENGTH: 300 LB FOR STRIKE, 600 LBS FOR CATCH.

FOR DESIGN FEATURE PURPOSES, THIS STANDARD TAKES PRECEDENCE OVER PROCUREMENT DOCUMENTS REFERENCED HEREIN. REFERENCED DOCUMENTS SHALL BE OF THE ISSUE IN EFFECT ON DATE OF INVITATIONS FOR BID.

(B) ENTIRE STANDARD REVISED AND REDRAWN

P.A. Other Cust ARMY - WC AF -	TITLE CATCH, CLAMPING AND STRIKE (CONCEALED SPRING TYPE)	MILITARY STANDARD MS 18015
PROCUREMENT SPECIFICATION NONE	SUPERSEDES: BUWEPS DWG NO. 2264300	SHEET 1 OF 2

REVIEW/USER INFORMATION IS CURRENT AS OF DATE OF THIS DOCUMENT. FOR FUTURE COORDINATION OF CHANGES TO THIS DOCUMENT, DRAFT CIRCULATION SHOULD BE BASED ON THE INFORMATION IN THE CURRENT FEDERAL SUPPLY CLASSIFICATION LISTING OF DOD STANDARDIZATION DOCUMENTS.

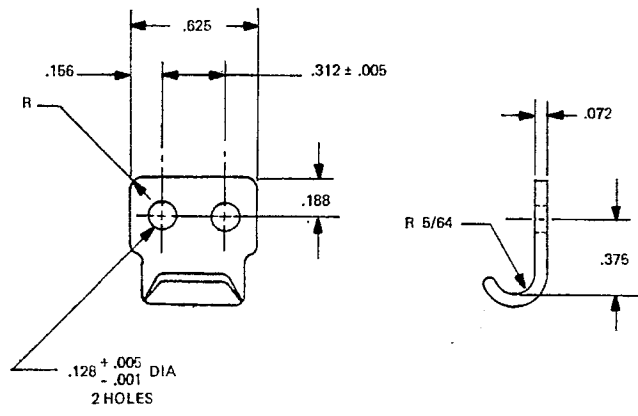
NOTICE

USER INTEREST:

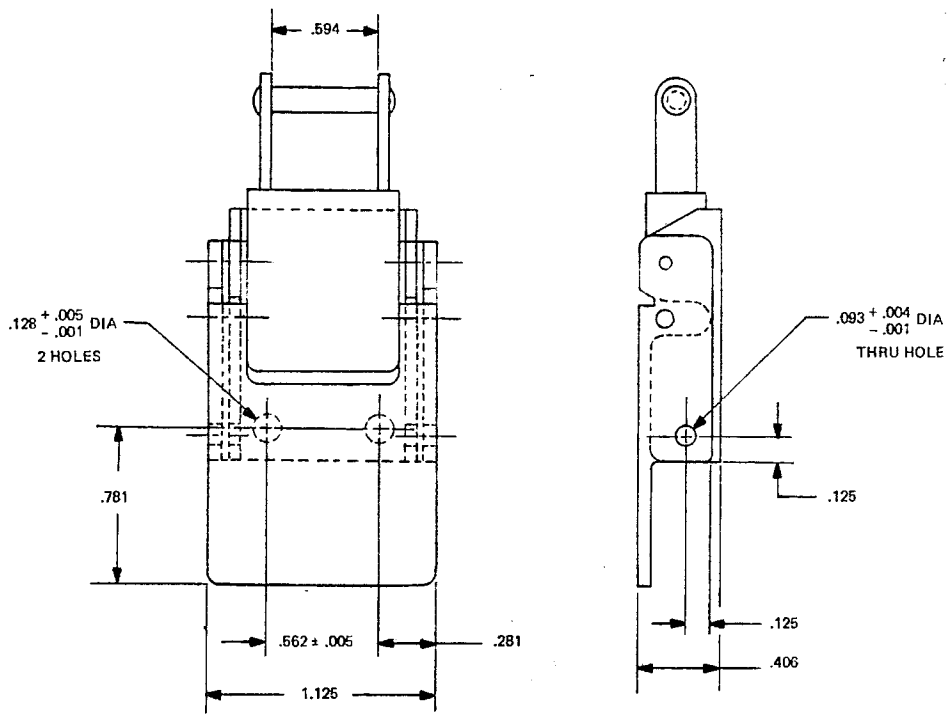
REVIEWER INTEREST:

any standard is approved by the Department of Defense industry for use by all Departments & Agencies of the Dept of Defense. Selection for all new engineering and applications and for repetitive use shall be made from this list.

FED. SUP CLASS
5340



-3 STRIKE



-2 CATCH

APPROVED 23 JAN 63 REVISED (A) (B) FOR CHANGES SEE SHEETS 1 AND 2

P.A. NAVY - OS Other Cust ARMY - WC AF -	TITLE CATCH, CLAMPING AND STRIKE (CONCEALED SPRING TYPE)	MILITARY STANDARD
		MS18015
DES: BUWEPS DWG NO. 2264300	SHEET 2	W105 PLATE NO. 17710

PREVIOUS EDITIONS OF THIS FORM ARE OBSOLETE.

H.A. GUDEN CO., INC

CONTROLLED COPY

REC. DATE 8/30/95

Rev B

FORM: G114

REVISED: AUGUST 9, 1995

AUG 21 1995